



TACT SWITCH

P/N:TSA36251-H



Professional Manufacturer Since 2000

SPECIFICATIONS

Funtion: Momentary action
 Contact Arrangement: SPST, Normally Open

Mechanical

Actuation Force: 180gf/280±50grams
 Life Expectancy: 50,000 Operations

Electrical

Contact Rating: 50mA @ 12V DC
 Dielectric Strength: 250V AC for 1minute
 Contact Resistance: 100mΩ Max.
 Insulation Resistance: 100MΩ Min.
 Travel: 0.25±0.1mm

Environmental

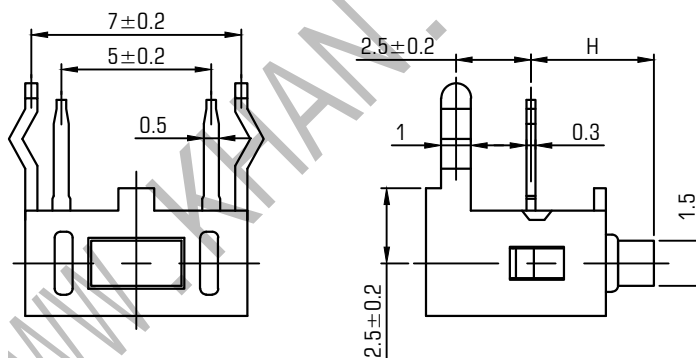
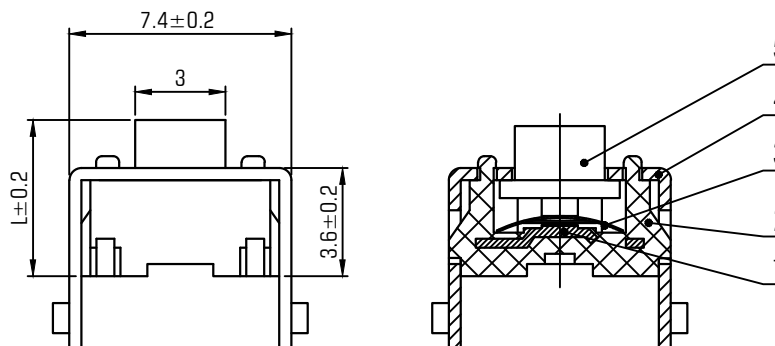
Operating Temperature: -25~+70°C
 Relative Humidity: (40°C) ≤95%

Materials

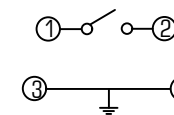
5.Stem: Ivory GP.PA66
 4.Cover: Ferrum with Copper and Tin
 3.Contact: Stainless steel with Silver cladding
 2.Holder: Black GP.PA66
 1.Terminal: Copper (H62Y) with Sliver Cladding

Packaging

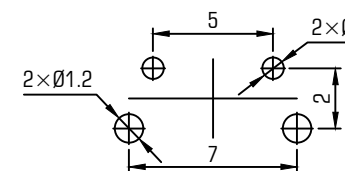
Bulk Package
 Inner Package: Plastic bag
 Outter Package: Carton



CIRCUIT DIAGRAM



P.C.B. LAYOUT



H	L
3.15	4.3
3.85	5



KANGHONG ELECTRONIC

VERSION		PROJECTION	DESIGN	YUDA AO
KH14FE22E			DRAWN	ZHIJIE LU
SCALE	SIZE	 Dimensions are shown:mm(inches)	APPROVAL	JUNHUI XU
4:1	A4		2015.11.07	