



# TACT SWITCH

P/N: TSD06314



## SPECIFICATIONS

Function: Momentary action  
 Contact Arrangement: SPST, Normally Open  
 Termination: SMD version

### Mechanical

Actuation Force: 180±50grams  
 Life Expectancy: 100K Operations

### Electrical

Contact Rating: 50mA @ 12V DC  
 Dielectric Strength: 250V AC for 1minute  
 Contact Resistance: 100mΩ Max.  
 Insulation Resistance: 100MΩ Min.  
 Travel: 0.25±0.1mm

### Environmental

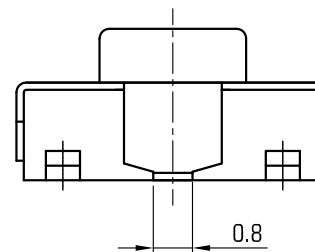
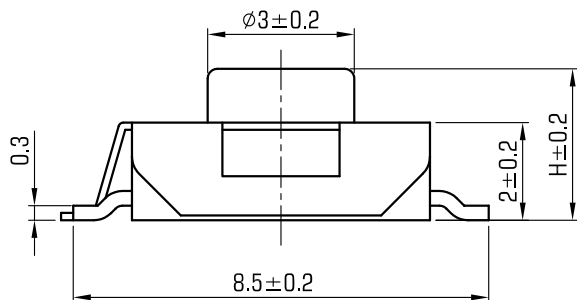
Operating Temperature: -25~+70°C  
 Relative Humidity: (40°C) ≤95%

### Materials

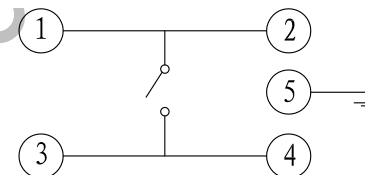
6.Cover: Stainless Steel  
 5.Stem: Black GP.PPA  
 4.Waterproof membrane: PIF membrane  
 3.Contact: Stainless Steel with Silver cladding  
 2.Holder: Black GP.PPA  
 1.Terminal: Copper with Silver Cladding

### Packaging

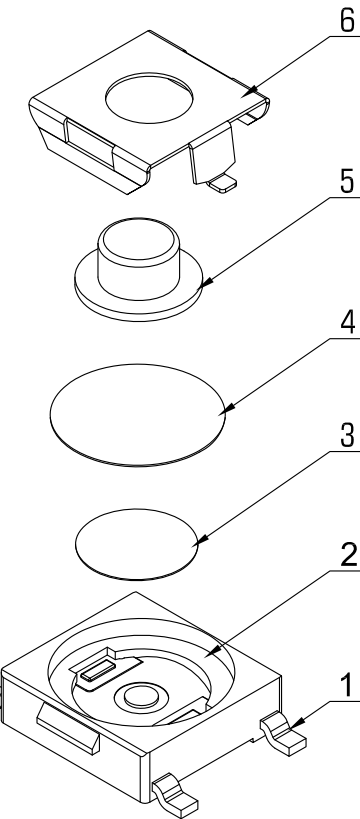
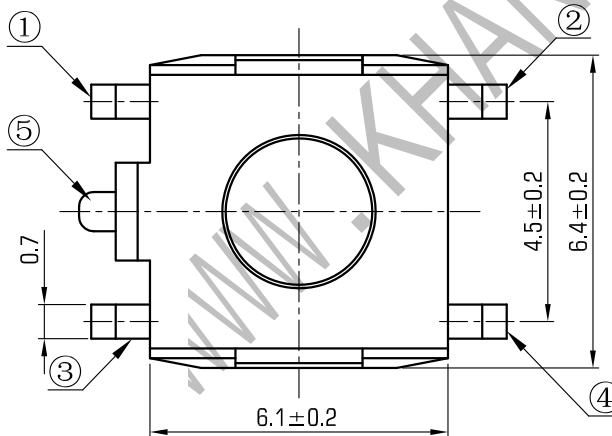
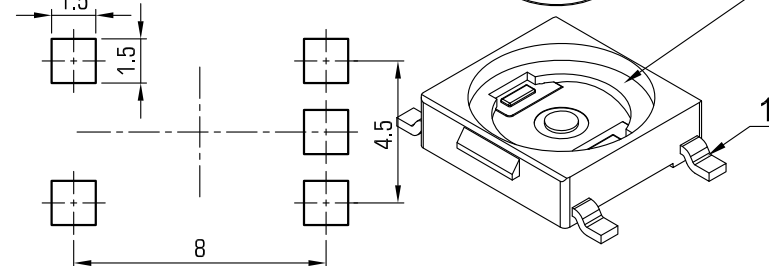
Bulk Package  
 Inner Package: Plastic bag  
 Outer Package: Carton



### CIRCUIT DIAGRAM



### P.C.B LAYOUT



H	2.5	2.7	3.1	3.4	3.8	5
---	-----	-----	-----	-----	-----	---



# KHAN ELECTRONIC

VERSION		PROJECTION	DESIGN	YUDA AO
KH14FE22E			DRAWN	YUDA AO
SCALE	SIZE	Dimensions are shown:mm(inches)	APPROVAL	JUNHUI XU
8:1	A4		2018.05.21	