



# TACT SWITCH

P/N: TSW12111

WATERPROOF

## SPECIFICATIONS

Function: Momentary action  
 Contact Arrangement: SPST, Normally Open  
 Termination: THD version

### Mechanical

Actuation Force: 230/330±50grams  
 Life Expectancy: 100K Operations

### Electrical

Contact Rating: 50mA @ 12V DC  
 Dielectric Strength: 250VAC for 1minute  
 Contact Resistance: 100mΩ Max.  
 Insulation Resistance: 100MΩ Min.  
 Travel: 0.25±0.1mm

### Environmental

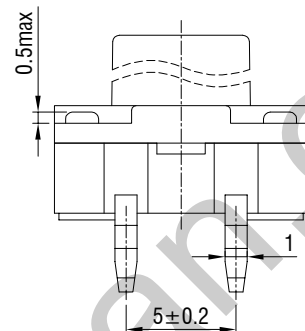
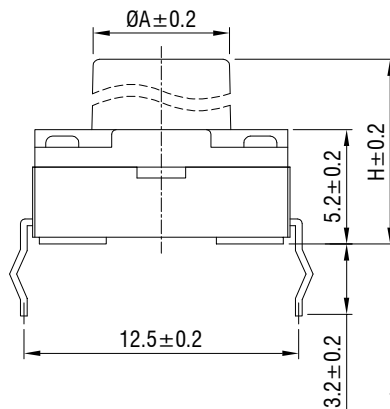
Operating Temperature: -25~+70°C  
 Relative Humidity: (40°C) ≤95%

### Materials

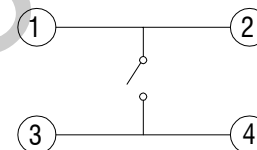
- 8.Cover: Black GP.PA66
- 7.Stem: Black GP.PA66
- 6.Washer: Rubber
- 5.Waterproof membrane: PIF membrane
- 4.Inner Stem: Black GP.PA66
- 3.Contact: Copper/SUS with Silver Cladding
- 2.Holder: Black GP.PA66
- 1.Terminal: Copper with Silver Cladding

### Packaging

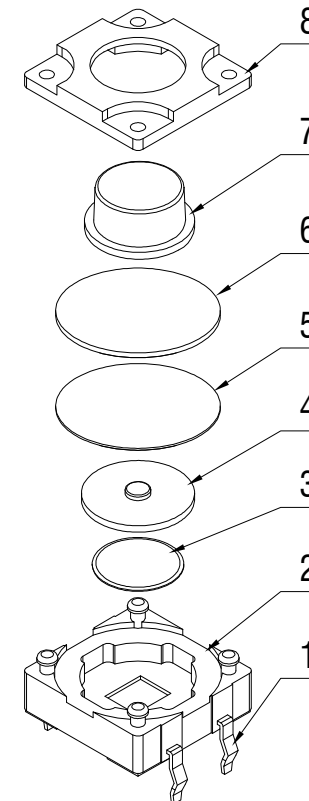
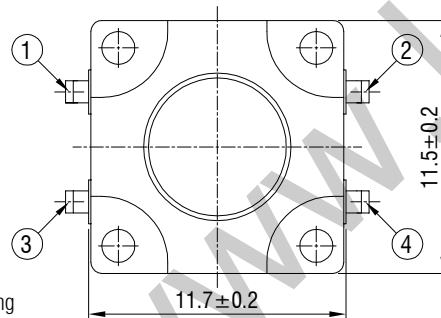
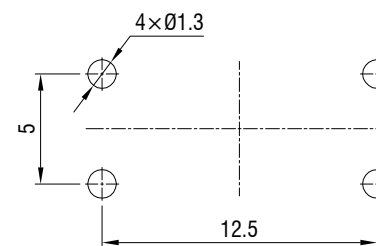
Bulk Package  
 Inner Package: Plastic bag  
 Outer Package: Carton



### CIRCUIT DIAGRAM



### P.C.B. LAYOUT



H	5.8	6	6.5	7	7.5	8	8.5	9	9.2	9.5	10	10.5	11	11.5
A	6.4	6.4	6.4	6.4	6.4	6.2	6.3	6.2	6.3	6.3	6.3	6.2	6.2	6.3
H	12	12.5	13	13.5	14	14.5	15.5	16.5	17	18.5	19.5	21.2	22.5	
A	6.2	6.2	6.2	6.2	6.2	6.2	6.2	6.2	6.2	6.1	6.1	6.1	6.1	



# WENZHOU KHAN ELECTRONIC

VERSION		PROJECTION	DESIGN	Shuqing Zhu
KH14FE22E			DRAWN	Wei Lin
SCALE	SIZE	Dimensions are shown:mm(inches)	APPROVAL	Johan Xu
3:1	A4		2022.02.21	